

**LITHUANIAN UNIVERSITY OF HEALTH SCIENCES
MEDICAL ACADEMY**



**BIOMEDICAL SCIENCES
STUDY FIELD MEDICINE**

**PROGRAMME OF INTEGRATED STUDIES
MEDICINE**

**THE SELF-EVALUATION REPORT
2013**

Rector of Lithuanian University of Health Sciences

Prof. Remigijus Žaliūnas

Head of the self-evaluation group

Prof. Algimantas Tamelis

Kaunas
March, 2013

Title of the study programme	Medicine
National code	601A30002
Higher education type	University
Circle (type) of study	Integrated studies
Mode of study	Full-time
Duration in years	6 years
The scope of the programme in credits	360
Qualifications awarded	Master of Medicine, Doctor of Medicine
The Registration date of study programme	17-08-2009
The start of the programme provision	1922
The language of instruction	Lithuanian and English
Other details of programme	Based on integral problem-based learning. Studies in clinical medicine are organised in problem based approach too, integrating various clinical subjects and are conducted in primary, secondary and tertiary medical care centres. Students are taught in small groups from the first year. Clinical practice is 30 credits volume and executed in regional hospitals throughout all Lithuania

Table 1 Self-evaluation group of the programme of Medicine

No	Name	Function	Responsibilities
1.	Prof. A.Tamelis	Head of self-evaluation group	Administration, coordination, development of the final self-evaluation report, presentation the faculty.
2.	Prof. L.Ivanovienė	Member	The programme aims and learning outcomes, The curriculum design
3.	Prof. A.Naudžiūnas	Member	The teaching staff
4.	Prof. A.Baranauskaitė	Member	Facilities and learning resources
5.	Prof. R.J.Nadišauskienė	Member	Study process and students' performance, Programme management
6.	Stud. M.Gedminas	Member	Study process and students' performance, Programme management
7.	Dr. D.Krylovienė	Member	Development of final development of the self-evaluation report, gathering and presentation of opinion of social partners

Head of self-evaluation group:

Dean of the Faculty of Medicine Prof.dr. Algimantas Tamelis,

Phone: work 8-37 327260, mobile 8-686-85298,

E-mail: algimantas.tamelis@kaunoklinikos.lt

CONTENT

CONTENT	3
ABBREVIATIONS.....	3
INTRODUCTION.....	4
ANALYSIS OF PROGRAMME.....	5
THE PROGRAMME AIMS AND LEARNING OUTCOMES	5
THE CURRICULUM DESIGN	9
THE TEACHING STAFF	14
FACILITIES AND LEARNING RESOURCES	18
STUDY PROCESS AND STUDENTS' PERFORMANCE ASSESSMENT	20
PROGRAMME MANAGEMENT.....	24
THE FIRST ANNEX – DESCRIPTIONS OF THE STUDY SUBJECTS AND/OR MODULES	Error! Bookmark not defined.

ABBREVIATIONS

ECTS	– European Credit Transfer and Accumulation system
EU	– European Union
GTF	– Faculty of Animal Husbandry Technology
KMA	– Kaunas Medical Academy
LiMSA	– Lithuanian Medical Students' Association
LR	– Lithuanian Republic
LUHS	– Lithuanian University of Health Sciences
LVA	– Lithuanian Veterinary Academy
MA	– Medical Academy
MF	– Faculty of Medicine
OF	– Faculty of Odontology
SKVC	– Centre for Quality Assessment in Higher Education
SLF	– Faculty of Nursing
SMD	– Student Scientific Society
SPC	– Study Programme Committee
VA	– Veterinary Academy
VSF	– Faculty of Public Health

INTRODUCTION

1. Lithuanian University of Health Sciences (hereinafter referred to as LUHS) is a state university – the subject of legal rights - acting as a public institution, which is established on the 30 of June in 2010 by the resolution of Seimas of the Republic of Lithuania, according to which Kaunas University of Medicine and Lithuanian Veterinary Academy were merged. LUHS is the largest university of biomedicine sciences that continues the best traditions of both schools.
2. The University has two collegial management bodies – the Council and the Senate and a sole management body – the Rector, who is elected by the Council. Chancellors and Vice-Rectors provide help for Rector. Medical Academy and Veterinary Academy are the main units of the University, which also includes Faculties, Research Institutes, University Hospital, Veterinary Clinics, Centre of Practical Training and Experiments, Theoretical and Clinical Departments, Faculty Institutes, Research Laboratories; other structural and functional units, which provide the needs for studies, research, health care and social and cultural life.
3. Teaching staff of LUHS consists of 167 professors, 225 associate professors, 333 lecturers and 484 assistant professors (by December 31, 2012). This entire staff provides qualitative studies of the first, second and third circle in biomedical sciences.
4. The University offers 27 study programmes. More than 6200 students including 517 foreign students from more than thirty five countries are studying in these programmes.
5. Medical Academy has five faculties: the Faculty of Medicine, the Faculty of Odontology, the Faculty of Pharmacy, the Faculty of Nursing, and the Faculty of Public Health, which educates professionals in medicine, medical and veterinary genetics, medical and veterinary biochemistry, odontology, oral hygiene, pharmacy, nursing, obstetrics, occupational therapy, kinesiotherapy, public health, social work in medicine and health psychology.
6. The Programme of Medicine is carried out in the Faculty of Medicine. Units of other faculties are also involved in teaching of this Programme. The Faculty ensures the integrity of research, studies and clinical practice. In accordance with biomedical studies, the Faculty carries out fundamental and applied research, experimental development as well as development of other scientific activities that provide necessary skills of research for students, improves professional qualification of teachers and researchers, and supplies the subjects taught with the newest knowledge of science and practice. Teachers of the Faculty work at University Hospital or other hospitals, and are experts recognized in Lithuania and worldwide.
7. Self-evaluation of the Programme was carried out by a group established by the Rector's Order No V-935, 27-11-2012 (table No 1). The personal input volume of each member of self-evaluation's group depended on member's competence. The development of self-evaluation also included all teaching staff involved in the programme of Medicine. The final version of self-evaluation was approved by all members of the group and by the Board of Faculty of Medicine (table No 2).

Table 2 Work schedule of the group of self-evaluation

Activities	Date
Discussion of self-evaluation course and distribution of activities	13-12-2012
Data collection and analysis	13-12-2012 – 15-01-2013
Discussion of initial self-evaluation results, discussion of programmes advantages and disadvantages, and means to ensure the quality of the programme	15-01-2013
Discussion of self-evaluation summary project	04-03-2013
Self-evaluation summary presentment for faculty community and social partners	13-03-2013
Final presentment of self-evaluation summary	30-03-2013

8. Evaluation of the programme was performed according to the methodology of programme self-evaluation of Centre for Quality Assessment in Higher Education and following legal acts of the Republic of Lithuania:
 - Republic of Lithuania. Law on higher education and research. 20-Apr-2009, No XI-242 (Official Gazette, 2009, No 54-2140)
 - Minister of Education and Science of the Republic of Lithuania. Order No V-501, 9-Apr-2010 „Regarding the approval of Description of general requirements for the awarding a degree of the first cycle and integrated study programs“(Official Gazette, 2010, No 44-2139 and No 88- 4676)
 - Director of Centre for Quality Assessment in Higher Education. Order No 1–01-162 „Methodology of self-evaluation of study programmes” (Official Gazette, 2010, No 156-7954).
 - Minister of Education and Science of the Republic of Lithuania. Order No ISAK–1652 „Regarding the approval of Description of external evaluation of study programmes and accreditation” (Official Gazette, 2009, No 96–4083, No 134–5862 and No 152–6860).
9. Former external evaluation of the integrated study programme Medicine was made by the Centre for Quality Assessment in Higher Education in Higher Education, in 2004.

ANALYSIS OF PROGRAMME

THE PROGRAMME AIMS AND LEARNING OUTCOMES

10. The demand of programme of Medicine is completely related to the demand for doctors and doctors - specialists. The analysis and planning of the demand of health care specialists including doctors is performed by Ministry of Health Care of the Republic of Lithuania.
11. According to the data of Lithuanian Department of Statistics, in 2011 there were 13 327 health care specialists (doctors) and this number almost did not decline during the last 5 years. From 2007 to 2011 the number of practicing doctors per 10 000 population did not change significantly: in 2007 there were 37.3 doctors per 10 000 population, in 2008 – 37.1, in 2009 – 36.6, in 2010 – 37.7, in 2011 – 38.8. Stable number of doctors was determined by: increased admission to studies of Medicine (Fig. 1), doctor’s average workload is more than full-time, the interest of doctors to work as long as possible. At the same time the prognosis about the demand for doctors and doctors - specialists till 2025 was made. The report claims that in future, comparing to 2007-2009 years, the demand of all doctors – specialists will increase, although not to the same extent.
12. The aim of the Programme of Integrated Studies Medicine is to prepare a doctor who gained up-to-date knowledge, practical skills and acquired adequate personal and professional value system, for health care practice and for further medical specialist studies. The aim of the programme corresponds with the mission of LUHS that is declared in LUHS Statute: “to educate and foster creative, honest, educated, independent, and enterprising personality”.

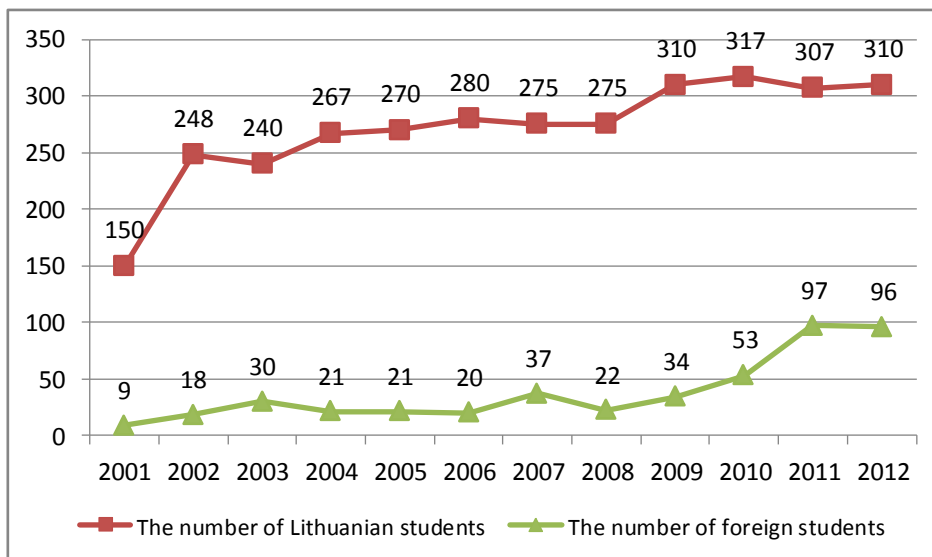


Figure 1 The number of admitted students in the programme of Medicine

13. Integrated Studies Medicine is the programme of applied science type that lasts 6 years and is oriented to practical work and ability of scientific research work that gives Master's degree and professional qualification of a Doctor of Medicine. Compared to other LUHS study programmes, the Programme of Integrated Studies Medicine is the most extensive and most numerous (attracting the largest number of students). The numbers of students in various programmes of LUHS and in faculties are shown in Figure 2.

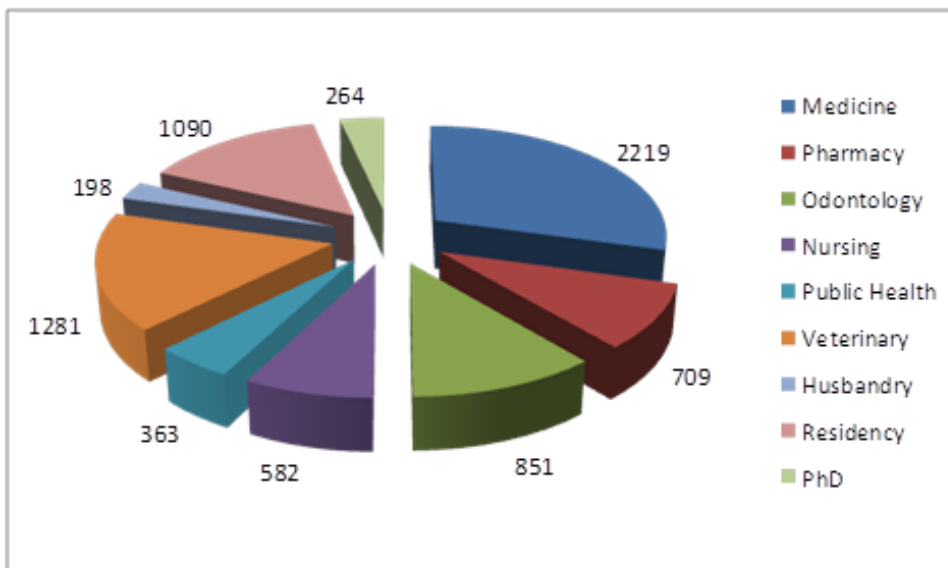


Figure 2 The number of students studying at LUHS faculties and programmes

14. New learning outcomes of the Programme of Medicine were formulated following recommendations, that were formed while implementing the activities of the projects "The Tuning Project (Medicine)"¹ and "Development of the Concept of the European Credit Transfer and Accumulation System at the National Level: Harmonization of the Credits and Implementation of the Learning Outcomes Based Study Programmes VP1-2.2-ŠMM-08-V-01-001"², and while consulting international experts (Richard Whewell (The University of Strathclyde, Glasgow, United Kingdom), Helen Cameron (The University of Edinburgh, Scotland, United Kingdom)). These Outcomes were approved by the Board of Faculty of Medicine in 06-02-2013.
15. In LUHS Programme of Integrated Studies Medicine, generic and specific (subject based) learning outcomes were singled out. Generic learning outcomes (transferable abilities) are of a general nature

¹ <http://www.tuning-medicine.com/pdf/booklet.pdf>

² <http://www4066.vu.lt>

and show the abilities of graduates to communicate and cooperate, continually learn and improve, act according to ethical obligations and etc., and specific learning outcomes describe the particularity of medical study programme and are the basis of a doctor's profession.

16. Generic learning outcomes of LUHS Programme of Integrated Studies Medicine:
The graduates can demonstrate the ability to:
 - 16.1. *Professional attributes*: act fairly, think critically and self-critically, be emphatic, creative, take the initiative, follow to ethical obligations;
 - 16.2. *Professional behaviour*: organise and plan activities, work autonomously or together with specialists engaged in other fields and in a multidisciplinary team; solve problems and make decisions, act in new situations and to adapt to them, assess the limits of one's competence and, if necessary, ask for help;
 - 16.3. *Dissemination of professional experience*: learn, including independent and lifelong learning, apply knowledge in practice and to teach others;
 - 16.4. *Professional erudition*: appreciate the diversity and multiculturalism, understand and appreciate customs of other cultures, work in an international context, develop general knowledge outside the field of medicine.

17. Subject – specific learning outcomes of LUHS Programme of Integrated Studies Medicine:
The graduates can demonstrate the ability to:
 - 17.1. *Consultation with a patient*: carry out a consultation with a patient according to his needs;
 - 17.2. *Assessing of clinical presentations, ordering investigations, making differential diagnoses and a management plan*: recognise, assess and describe symptoms, nature and course of the clinical presentations, order appropriate investigations and interpret the results; make differential diagnoses; negotiate an appropriate management plan with patients and carers;
 - 17.3. *Immediate care of medical emergencies, First Aid and resuscitation*: identify and systemically evaluate acute health disorders and start treating them, provide basic First Aid, provide cardio-pulmonary resuscitation, basic and advanced life support, appropriate clinical procedures;
 - 17.4. *Administration of treatment*: describe the mechanism of drug action, administer adequate and proper treatment, select appropriate drugs and other methods of treatment to the clinical context and evaluate their potential benefit and risks;
 - 17.5. *Achievements of biomedical sciences*: Apply to medical practice scientific principles, methods and knowledge of biomedical sciences (anatomy, histology, genetics, immunology, microbiology, pathology, physiology, biochemistry, pharmacology, etc.);
 - 17.6. *Communicate effectively in a medical context*: communicate clearly, sensitively and effectively with patients, relatives of patients, disabled people and colleagues;
 - 17.7. *Apply ethical and legal principles in medical practice*: perform clinical work and apply ethical principles and national and European legislation to clinical care;
 - 17.8. *Assess psychological and social aspects on a patient's illness*: identify and assess impact of psychological, behavioural and social factors, including alcohol and substance abuse, on health, morbidity, illness manifestation; and in response to them explain, counsel and persuade;
 - 17.9. *Apply the principles, skills and knowledge of evidence-based medicine*: apply scientifically – based evidence to practice: defined and carried out by an appropriate search and critical appraisal of published medical literature;
 - 17.10. *Use information and information technology effectively in a medical context*: to use computers, software, and other achievements of information technology in medical practice;
 - 17.11. *Ability to apply scientific principles, methods and knowledge to medical practice and scientific research*: to apply scientific principles, methods and knowledge to medical practice and scientific research;
 - 17.12. *Promote health, engage with population health issues and work effectively in a health care system*: analyse population health problems, identify their causes and outcomes and implement knowledge about disease prevention and capabilities of population health promotion.

18. The objectives and learning outcomes of the Programme of Integrated Studies Medicine are published in University, Lithuanian and European information sources. Official information about the programme, its aims and mode of studies are presented on the LUHS website³. Also, this information is published on the webpage of the Admission Board, in the official University newspaper „Ave Vita“ and leaflets designed for secondary school-leavers. The information about the objectives and learning outcomes of the course units is available in the LUHS information database⁴. During the Lithuanian higher education institutions informative events (Science days, Fair of HEI) publications and leaflets are disseminated where the objectives and learning outcomes of the programme, mode of studies, duration of the programme, acquired degree and professional qualification are described. Information associated with the programme is presented to the Ministry's of Education and Science of the Republic of Lithuania information system AIKOS. Annually *Doors open* days are organized at LUHS during which pupils, their parents and teachers are supplied with the information about the rules of acceptance to the University, the aims and outcomes of the programme, further studies and career opportunities. On international level the information that is associated with the programme is spread through international and national websites of the European countries⁵.
19. The aim, learning outcomes and ways of achieving them are also based on the information obtained in consultation with stakeholders. A lot of valuable information along with advice is received from residency bases, resident chiefs, and stakeholders – managers of health care institutions, representatives of Lithuanian Doctors Union, etc. The learning outcomes are analysed and considered taking into account the feedback and achievements of the programme graduates, applicants for residency, the opinion of resident chiefs, and the feedback of stakeholders – doctors who work in non-university health care institutions⁶. On the Faculty of Medicine level the analysis and supervision of learning outcomes is carried out by the Committee of Study Programme, in participation of delegated representatives of students and external social partners, and by the development of annual study plans that are approved by the Board of the Faculty of Medicine. On the University level the analysis and supervision is carried out by the Committee of Quality Assurance and Monitoring that was approved by LUHS Rector's order No V-412 of 15 May 2012. Obtained results are announced publicly in the meetings of the Board of the Faculty of Medicine, Rectorate and Senate of University, and University newspaper “Ave vita”.
20. The Programme of Integrated Studies Medicine at Lithuanian University of Health Sciences corresponds fully to European and Lithuanian legislation:
- Directive 2005/36/EB of the European Parliament and of the Council (2005/36/EB September 7 2005)
 - Law on Higher Education and Research of the Republic of Lithuania. 20-Apr-2009, No XI-242
 - Resolution No 1359 of the Government of the Republic of Lithuania “Regarding the doctors training”, 31 October 2003
 - Bologna qualifications framework, Dublin descriptions of the second cycle study and Lithuanian qualifications framework of 7th level of qualification requirements (Resolution No 535 of the Government of the Republic of Lithuania “Regarding approval of Description of the Lithuanian qualifications framework”, 4 May 2010)
 - Order of the Minister of Education and Science of the Republic of Lithuania and the Minister of Health Care of the Republic of Lithuania No ISAK-480/V-210 “Regarding minimum requirements for the training and qualifications of doctors, dentists, midwives and pharmacists”, 11April 2003
 - Order of the Minister of Health Care of the Republic of Lithuania No 217 “Regarding Lithuanian Medical Standards MS 1995 Medical Doctor. Functions, duties, rights, competence and responsibilities” 25 April 1995, and subsequent amendments
 - Order of the Minister of Education and Science of the Republic of Lithuania No V-2212 “Regarding approval of description of study cycles”, 21 November 2011

³ <http://ismuni.lt/lt/struktura/medicinos-akademija/medicinos-fakultetas/fakulteto-istorija-ir-dabartis/>

⁴ https://sis.ismuni.lt/visiems/Visiems/dalyku_paieska.aspx

⁵ <http://avicenna.ku.dk/database/medicine/>; <http://www.eunicas.ie/index.php/eunicas/course/master-of-medicine-449.html>; <http://www.mastersportal.eu>.

⁶ http://www.ects.cr.vu.lt/Files/File/Profesines_veiklos_lauko_tyrimas.pdf

- Order of the Minister of Education and Science of the Republic of Lithuania No V-501 „Regarding the approval of Description of general requirements for the awarding a degree of the first cycle and integrated study programs“ 9 April 2010, and the Order No V-1190, “Regarding the Amendment of the Order of the Minister of Education and Science No V-501,9-Apr-2010 „Regarding the approval of Description of general requirements for the awarding a degree of the first cycle and integrated study programs“, 15 July 2010.
21. The objectives of the Programme, learning outcomes and methods of achieving are consistent with the requirements of European projects *The Tuning Project (Medicine)*⁷ and of *Medine 2*⁸. It should be noted that LUHS was and still is an active participant in the above mentioned projects. Programme is also in accordance with the philosophy of International Medical Education Association (AMEE), and answers the need in student-oriented medical studies, adjust the content of medical professional training programmes to the learning outcomes, developed clinical skills and maintain professional ethics.
 22. Graduates can work in health care institutions or enter in non-degree awarding studies at the residency in order to obtain the qualification of doctor- specialist.
 23. After graduation from residency training and the acquisition of the qualification of doctor - specialist one can study in the third cycle – doctoral studies.

Summary

24. The aim of the Programme meets University mission, and the learning outcomes of the Programme correspond to the international recommendations. System of monitoring do all graduates are achieving stated learning outcomes on proper level is under development.

THE CURRICULUM DESIGN

25. The Programme of Integrated Studies Medicine is a multidisciplinary programme with the duration of 6 years, and the volume of 360 credits. Programme was updated and problem-based method was implemented in 2005-2008 carrying out the project of EU Structural Funds. Studies according to the updated study plan started in 2006/2007 academic year.
26. Structure of the Programme is shown in Figure 3. In the first year studies are subject – based. From the second year Programme is based on problem-based studies integrating basic and clinical subjects, analysis of real clinical situations. This knowledge and skills are applied and developed in 4 – 6 years in solving clinical problems.

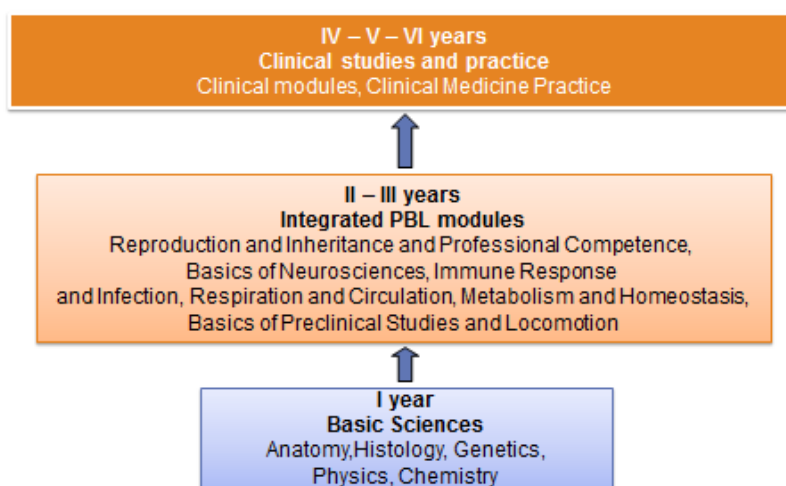


Figure 3 Principal structure of LUHS Programme of Integrated Studies Medicine

27. The content of modules and complexity of skills developed increase in course of the programme. Important in medical science basic subject knowledge and basics of scientific research organization are acquired during the first year. From the second year acquired and new knowledge are applied in the

⁷ <http://www.tuning-medicine.com/>

⁸ <http://medine//2.com/>

- medical context, searching for a link between the body structure and function, pathogenesis of the main body disorders, symptoms, diagnosis and treatment. From the fourth year, the knowledge and skills acquired in previous studies are used and developed in integrated clinical studies. After the implementation of problem-based learning, active teaching/learning methods, such as active-group discussion, self-directed work in small groups, preparation and presentation of projects are applied.
28. Number of course units per academic year depends on the year of study. 1st year students study 12 subjects, 2nd and 3rd year students study 6 subjects and/or modules, 4-6th year students study 5-6 subjects and/or modules. During the period of 6 years of study student's total workload is almost the same and makes up 60 ECTS credits per year. Contact and independent time ratio during 1st, 2nd, 3rd, 4th, 5th year is respectively 2.17; 2.86; 2.18; 2.86, 3.11 and 0.62 – during the 6th year studies.
 29. The volume of general university studies makes up 34 credits: mandatory subjects make up 22 credits; and elective subjects make up 12 credits. The total volume of study area subjects in the programme is 326 credits: mandatory subjects – 312 credits, and the volume of elective subjects – 14 credits.
 30. Until 2008/2009 graduates of Medicine gained the clinical experience separately, during the period of internship organized according to the principles of residency. Since 2009/2010, after the legal basis of LR was changed, internship has become a part of the Programme of Integrated Studies of Medicine as a module of clinical medical practice (internship). This practice is performed in clinical bases accredited by LUHS in all Lithuania. After the completion of clinical practice programme the final examination is taken during which the practical skills are assessed, including ability to perform differential diagnosis and make plan of treatment.
 31. In order to acquire the competence of scientific work all students do research at different LUHS units.
 32. Study programme Medicine is completed if the following requirements are performed:
 - After having passed all the exams and awarded all credits
 - After having completed medical practice and having passed final examination in it
 - After the successful public presentation of research work
 - After having passed the final theoretical exam.
 33. The plan of integrated studies Medicine at LUHS for academic year 2013/2014 is confirmed by the Council of Medical Faculty on 12 December 2012 (table 3 – 8).

Table 3 Plan of studies, I year

No.	Code of Subject	Subject/module	Type of subject	Contact hours	Credits	Semester	Assessment
1.	MF/FMB/M-V14	Medical Physics	S ⁹	90	4	1	Exam
2.	MF/BCM/M-V40	Medical Chemistry	S	90	5	1	Exam
3.	GTF/BIO/M-V01	Cytology, Parasitology	S	90	5	1	Exam
4.	MF/ANI/M-V15	Anatomy	S	160	12	1;2	Exam
5.	MF/HIS/M-V11	Human Histology and Embryology	S	80	5	2	Exam
6.	GTF/BIO/M-V02	Genetics	S	90	4	2	Exam
7.	MF/FMB/M-V13	Basics of Statistics and Informatics	S	90	5	2	Exam
8.	MF/KEK/M-V53	Professional Language	G ¹⁰	150	7	1;2	Interim credit
9.	M-V64	General Basics of Health	S	90	4	1	Exam
10.	MF/KEK/M-V54	Introduction to Studies	G	54	3	1	Project
11.		Elective in Fundamental Philosophy	G	60	3	1;2	Exam
12.		Elective in General University Studies	G	52	3	2	Exam
Total				1096	60		

Table 4 Plan of studies, II year

No.	Code of Subject	Subject/module	Type of subject	Contact hours	Credits	Semester	Assessment
1.	MF/ANI/M-V16	Basis of Pre-clinical Studies and Locomotion	S	300	16	3	Exam
2.	MF/BCM/M-V42	Metabolism and Homeostasis	S	300	16	3;4	Exam
3.	MF/VIL/M-V23	Respiration and Circulation	S	300	16	4	Exam
4.	MF/KEK/M-V53	Professional Language	G	90	4	3;4	Interim credit
5.	VSF/FES/M-V75	Medical Philosophy	G	120	5	3;4	Exam
6.		Elective Humanitarian Subject	G	68	3	3;4	Project
Total				1178	60		

⁹ Type of subject: S - study area subjects

¹⁰ Type of subject: G - general university studies

Table 5 Plan of studies, III year

No.	Code of Subject	Subject/module	Type of subject	Contact work hours	Credits	Semester	Assessment
1.	MF/HIS/M-V12	Human Reproductive Health and Essentials of Clinical Studies	S	300	16	5	Exam
2	MF/FIK/M-V09	Fundamentals of Neuroscience	S	300	16	5;6	Exam
3	MF/BCM/M-V42	Immune Response and Infection	S	300	16	6	Exam
4	MF/KEK/M-V53	Professional Language	G	60	3	5;6	Interim credit, exam
5.	VSF/ADK/M-V12	Environmental and Social Medicine	S	60	3	5	Exam
6.		Elective in Medical Fundamentals	S	60	3	6	Exam
7.		Elective in Fundamental Philosophy	G	60	3	5, 6	Exam
Total				1140	60		

Table 6 Plan of studies, IV year

No.	Code of Subject	Subject/module	Type of subject	Contact work hours	Credits	Semester	Assessment
1.	MF/KRD/M-V23	Cardiovascular Diseases and The Adrenal Glandular Disease	S	264	15	7, 8	Exam
2.	MF/OTK/M-V08	Diseases of Locomotion and Musculoskeletal System, Intensive Care And Urgent Medicine (part I)	S	194	9	7, 8	Interim credit
3.	VSF/ADK/M-V12	Chest Diseases, Allergology and Clinical Immunology & Haematology and Oncology	S	260	15	7, 8	Exam
4.	M-V45	Skin, Venereal, Infectious Diseases	S	127	6	7, 8	Exam
5.	MF/PSI/M-V17	Psychiatry and Clinical Psychology	S	116	6	7, 8	Exam
6.	VSF/SMK/M-V15	Public Health (part I)	S	200	9	7, 8	Interim credit
Total				1161	60		

Table 7 Plan of studies, V year

No.	Code of Subject	Subject/module	Type of subject	Contact work hours	Credits	Semester	Assessment
1.	MF/VLK/M-V60	Children Diseases	S	239	12	9, 10	Exam
2.	MF/AKG/M-V37	Obstetrics and Gynaecology	S	251	12	9, 10	Exam
3.	MF/ANZ/M-V11	Diseases of Locomotion and Musculoskeletal System, Intensive Care and Urgent Medicine (part II)	S	198	9	9, 10	Exam
4.	MF/CHI/M-V28	Diseases of Digestive System, Kidney and Urinary Tract Diseases and Clinical Toxicology	S	361	18	9, 10	Exam
5.		Clinical Neuroscience (part I)	S	162	9	9, 10	Interim credit
Total				1211	60		

Table 8 Plan of studies, VI year

No.	Code of Subject	Subject/module	Type of subject	Contact work hours	Credits	Semester	Assessment strategy
1.	VSF/PMK/M-V09	Public Health (part II)	S	126	6	11, 12	Exam
2.	MF/AK/M-V18	Eye, ENT, Maxillo-Facial Diseases	S	138	6	11, 12	Exam
4.	SLF/GER/M-V04	Geriatrics and Family Medicine	S	130	6	11, 12	Exam
5.		Elective Speciality Subject	S	198	8	11, 12	Exam
6.	MF/PSC/M-V04	Clinical Practice of Medicine and Research Work	G		30	11, 12	Exam
7.		Research Work Arrangement and Presentment	G	18	3	11, 12	Final work
8.	MF/FMB/M-V05	Final Test of the Program	G	4	1	12	Exam
Total				614	60		

Summary

34. Programme structure, content, scope of study is appropriate to achieve outcomes and meet the Lithuanian and European legislation requirements. Programme is orientated to the student, integrated and delivered on problem-based learning method. There is no deep separation between pre and clinical subjects. The subjects are organized in a consistent sequence and are not repeated. Due to the implementation of problem-based learning system and changing the legal basis of the programme, the programme structure has changed. Student – centred and outcome based approach is still quite new for the staff and needs further development. It is planned to improve execution, delivery and assessment of scientific work too. Together with the teachers of Nursing Faculty it is planned to involve

new subjects based on inter-professional studies. After the Simulation Centre has started working in full, there will be a possibility to improve acquisition of standardised practical skills in clinical subjects.

THE TEACHING STAFF

35. The main criteria for the recruitment of academic staff are the needs of the departments and matching qualification requirements. Qualification requirements are provided by legislation:
- Republic of Lithuania. Law on higher education and research. 20-Apr-2009, No XI-242 (Official Gazette, 2009, No 54-2140)
 - LUHS Statute (Official Gazette, 2010, No 81-4231; Approved 30-06-2010)
 - Minister of Education and Science of the Republic of Lithuania. Order No V-501, 9-Apr-2010 „Regarding the approval of Description of general requirements for the awarding a degree of the first cycle and integrated study programs“
 - LUHS Senate resolution No 4-3, “LUHS teaching staff and research staff acceptance to the positions procedure”, 23 December 2010
 - LUHS Senate resolution No 16-21 “LUHS Head of the department, head of the clinic election regulation”, 23 December 2011
 - LUHS Senate resolution No 19-09 “Principles of LUHS staff acceptance and performance evaluation to the positions”, 29 March 2012
36. LUHS is signing employment contracts of limited duration - five years, which make secure a turnover and renewal of the teaching staff. Teachers who hold primary contract with the Faculty usually teach students of the Programme of Integrated Studies Medicine and teachers who holds primary contract with the University Hospital usually are responsible for resident training. Despite contract primacy, all teachers are recruited through the competition, for a five years period. About 80% of graduates of 3rd cycle LUHS studies pursue a professional career at various University departments.
37. Admission concurs is carried out by Faculty Teaching and Research Staff Recruitment Commission, and by University Professor’s Certification and Recruitment Commission. During last three years Faculty of Medicine Teaching and Research Staff Recruitment Commission certified and hired 284 teachers: for associate professor’s positions – 83, lecturer’s – 124, assistant professors – 77. Six teachers who participated but did not meet the qualification requirements were not accepted. University Professor’s Certification and Recruitment Commission during the last three years certified and hired 91 full professors, didn’t certified and didn’t give an admission for 4 people.
38. For the execution of the programme of Medicine, abundant teaching staff is invoked: 120 (14.08%) of professors, 149 (17.49%) of associate professors, 238 (27.93%) of lecturers and 345 (40.49%) of assistant professors: in total – 852 teachers of Faculty of Medicine and relevant Departments of other Faculties. Even 59% of teachers of the programme of Medicine have scientific degree and meet the requirement of legal acts of the Republic of Lithuania that at least half of the studies subjects should be taught by scientists¹¹.
39. IV - VI course of study is focused on the clinical subject’s studies, master of practical skills and research work. 363 teachers out of 605 (60%) who work with the IV - VI year students, have a scientific degree, and all the lecturers’ who teach clinical disciplines, have valid license in a relevant field of medical practice. Teachers’ scientific work is conducted and scientific papers are published on the area, where is performed pedagogical and practical activity which fully complies with the General Requirements of Master Studies¹².
40. The programme Medicine ensures a number of ratios of teachers and students working with various forms of coursework in accordance with the current LR Labour Code requirements. Streaming lectures read in 10 group’s students together, during practice work time the teacher works with a group of 8 - 10 students.

¹¹ Minister of Education and Science of the Republic of Lithuania, Order No V-501 „Regarding the approval of Description of general requirements for the awarding a degree of the first cycle and integrated study programmes“ 9-Apr-2010

¹² Minister of Education and Science of the Republic of Lithuania, Order No V – 826, 3 June 2010

41. The vast majority of the teachers employed in the Medical programme are under the age of 50 (Fig. 4). The teachers of the most employable age (35 – 54) make the largest part (66.2%) of teaching staff. A sufficient number of young teachers (25 – 44 years) allow consistency and continuity in the educational process. The teachers over 65 make only 2.2% of teaching staff.

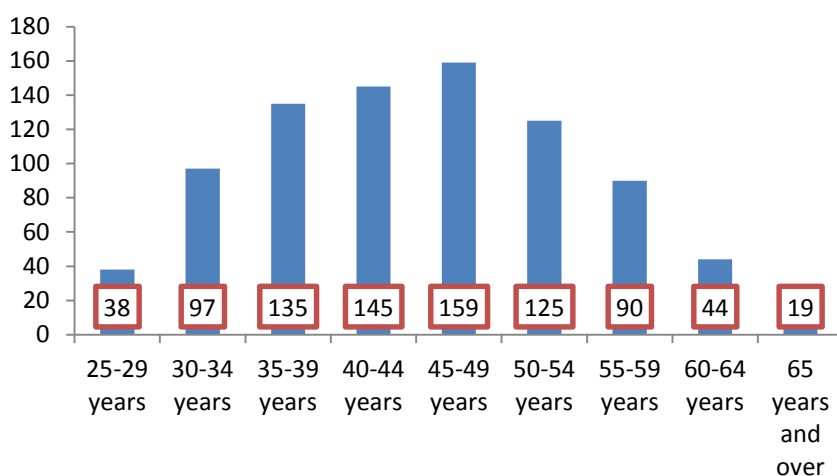


Figure 4 Age of the Teachers Employed in the Programme Medicine

42. The main reasons of teaching staff's turnover are retirement and going on pregnancy – childbirth and child rearing leave. Cases of the job place change are not common. If employee exited from his duties, aspired Office - seekers are young scientists.
43. The extent of teaching load and its distribution are specified by the LUHS regulation of teaching load and wages-fund calculation for the LUHS units. The unit teachers are employed with a single contract of employment to work with the students of all study cycles and programmes. The working time for one full-time teaching position is 30 hours per week. The structure of a full-time teaching position includes: planning and implementation of studies, research, application of the research results to studies, storage of scientific knowledge, health care activity related to the study process, development of creative activity, cultural upholding, participation in other significant activities of the University and University Units. The Head of a Department allocate the structural parts of a teaching position and ensures the implementation of the study process and study-related activities of the Department; and creates conditions for a teacher to meet the minimum performance evaluation requirements for the position of LUHS teaching and research staff.
44. In the programme of Medicine the unity of studies, research and clinical practice has been implemented. Teachers perform educational, but also the scientific and clinical work, organize and implement residency studies, programs of physicians' professional development.
45. The main principle of scientific research of teachers of programme of Medicine is complexity. These main research programmes carried: “Cardiology”, “Endocrinology”, “Neurobiology”, “Gastroenterology”, “Maxifacial and oral pathology”, “Infectology”, “Immunology and Pulmonology”, “Mother and Child Health”, “Ophthalmology”, “Oncology”, “Otorhinolaryngology”, “Emergency Medicine”, “and Nephrology”.
46. In 2009, important programmes for improving of research facility were started: an integrated science, studies and business valley "Santaka" developmental programme for the establishment of the centre of health technologies, and the national complex programme “Medicine”, enabling the formation of national-level open-access integrated research and competence centres for medical science.
47. In recent years significantly increased number of teacher's publications in journals that have impact factor: 760 over 5 years (Table 9).

Table 9 The list of 2008 – 2013 the most important publications of Medical programme teachers

Code	Name	Quantity
D1	Summary of doctoral thesis	109
K1a	Monograph	2
K1b	Study	2
K2a	Textbook	57
K2b	Teaching book	102
K2c	Teaching and methodical aid	37
K2d	Other studies literature	7
K3a	Dictionary	2
K3c	Encyclopaedia	1
K3d	Handbook	7
K3f	Other informational publications	5
K4c	MTD, reports on projects, etc.	6
K4d	Other books	5
N5	Patent registered in Lithuania	1
P1a	Scientific paper in conference publication collection ISI Proceedings	10
P1b	Scientific paper in conference publication collection LRC-approved DB	1
P1d	Scientific paper in peer-reviewed foreign publication of international conference	31
P1e	Scientific paper in peer-reviewed publication of Lithuanian international conference	109
P1f	Scientific paper in peer-reviewed publication of Lithuanian conference	147
P2a	Scientific paper in non-reviewed foreign publication of International Conference	4
P2b	Scientific paper in non-reviewed publication of International Conference in Lithuania	20
P2c	Scientific paper in non-reviewed publication of Lithuanian conference	35
R	Manuscript	2
R1	Doctoral thesis	108
R2	Summary of habilitation thesis	1
R3	Report	8
S1	Scientific paper in ISI Web of Science (100 of quoted. Indicator)	760
S2	Scientific paper in ISI Master Journal List	23
S3	Scientific paper peer- reviewed in scientific publications which are assessed on the other DB	403
S5	Scientific paper in other peer-reviewed publications	211
S6	An article in popular scientific publication	982
T1a	Thesis on ISI Web of Science and ISI Proceedings	176
T1b	Thesis on ISI Master Journal List	308
T1c	Thesis in other DB	139
T1d	Peer-reviewed extended abstracts	177
T1e	Thesis in other peer-reviewed publications	447
T2	Conference thesis in non-reviewed publications	975
Y	Chapter of a book	7
56	Article in a newspaper	2
Total number of publications (contribution of authors of Faculty of Medicine: 3153.08)		5412

48. Academic staff exchange usually is performed with EU countries, mainly through the Erasmus programme. Recently, academic exchange has intensified between LUHS and Central Asian countries, especially Kazakhstan. The exchange structure is different because LUHS teachers take part in it for consultation and teaching, while teachers from Central Asian countries come to improve their educational and professional qualification. Teacher exchange results are shown in Tables 10 – 12.

Table 10 Medical programme teachers, who took part in Erasmus (teaching, training)

Year	Number of teachers	Countries
2007-2008	34	Turkey, Portugal, Denmark, Latvia, Germany, the Netherlands, Poland, Austria, Estonia, Finland, Norway, Sweden, Hungary
2008-2009	39	Turkey, Romania, Denmark, the Netherlands, Poland, Austria, Estonia, Finland, Sweden, Czech Republic, Italy, France, Spain
2009-2010	34	Turkey, Romania, Denmark, Finland, Sweden, Italy, France, Spain, Iceland, United Kingdom, Norway, Portugal, Germany
2010-2011	37	Turkey, Denmark, Finland, Sweden, Italy, Spain, the United Kingdom, Norway, Portugal, Germany, Belgium, the Netherlands, Estonia, Greece
2011-2012	44	Turkey, Denmark, Finland, Sweden, Italy, Spain, the United Kingdom, Norway, Germany, Belgium, the Netherlands, Latvia, Czech Republic

Table 11 Academic staff exchanges with Central Asian countries

	Incoming Teachers	Outgoing Teachers
Kazakhstan	165	71
Tajikistan	6	28

Table 12 Foreign university teachers, who came for academic work (teaching, training) under the Erasmus programme

Year	Number of teachers	Countries
2007-2008	13	Turkey, Portugal, Germany, the Netherlands, Poland, Finland, Norway, Bulgaria, Czech Republic, Spain
2008-2009	10	Turkey, Germany, the Czech Republic, the Netherlands, Latvia, Finland, Spain
2009-2010	10	Turkey, Denmark, Finland, Sweden, Italy, France, Spain, Iceland, United Kingdom, Norway, Portugal, Germany
2010-2011	13	Turkey, Italy, Spain, Portugal, Germany, Bulgaria, Poland, Norway
2011-2012	16	Turkey, Finland, Spain, the United Kingdom, Germany, Belgium, the Netherlands, Latvia

49. The University provides good possibilities for programme teachers to improve their qualifications. For the continuous monitoring and improvement of teachers' educational qualifications the Centre of Teachers' Educational Competence was established at LUHS. It provides series of seminars such as "Systems and Didactics of Higher Education", "Peculiarities of Teaching and Learning Paradigms in the context of the Bologna Declaration", and programme "Module tutor training (Level I)". 450 teachers of programme Medicine have been improving their qualifications for the last 5 years.
50. The Faculty allocates funds for the teachers to improve their qualifications at the world famous centres (educational courses at the Universities of Dundee and Edinburgh, AMEE-ESME Online Courses, internships at the University of Geneva and others), main conferences on medical education "The Ottawa Conference on the Assessment of Competence in Medicine and the Healthcare Professions", "An International Association For Medical Education".
51. Scientific competence is improved by attending scientific and practical conferences, and by participating in academic internships. During 5 years, 514 teachers of medical programme participated in the conferences and seminars abroad. Every year about 30 teachers go abroad for an internship; mostly young active teachers engaged in scientific research. Also Faculty Departments by themselves or together with Lithuanian and foreign partners actively organized scientific and scientific-practical conferences: 201 such an events were arranged in 2012.
52. All teachers of programme of Medicine of clinical units improved their clinical skills by participating in training programmes in Lithuania and abroad. The funds for this purpose were allocated from the budgets of Republic of Lithuania and of the LUHS.

Summary

53. A large team of highly qualified teaching staff participates in the programme of Medicine. A constant renewal of the teaching staff allows the teachers to continue their career at the university after doctoral studies. The unity of research, education and practice is realised in the programme; conditions for teachers' improvement are created. Unfortunately, the training of teachers' educational skills is still imperfect, especially in terms of international experience. As the material supply of the university increases, the activities for teachers' educational skill improvement are actively promoted.

FACILITIES AND LEARNING RESOURCES

54. The first three years students have their lectures, laboratory work and practice at the central building of LUHS (Mickevičius str. 9), Teaching Laboratory Building (Eivenių str.4), and at the University unit in Jankaus str. 2. Clinical studies for the upper year students are carried out at the LUHS Hospital "Kauno klinikos" (Eivenių st. 2) and Kaunas City Hospital (Josvainių st. 2). For study purposes the LUHS Distance Learning Centre is used too.
55. In total, 18 university-shared auditoriums are used to carry out lectures for 20 to 250 students. Each unit has enough own rooms to conduct training seminars, tutorial sessions, and practical work. The premises used for the studies satisfy the regulations of work safety and standards of hygiene; they have the Internet access.
56. Classes and teaching rooms are equipped with video equipment, computers, if necessary interactive boards, laboratory equipment, microscopes, negatoscopes, simulators, medical mannequins. The number of equipment of teaching laboratories is sufficient, thus every student is able to use modern methods, perform experiments during laboratory work, analyse and describe experimental results. Collection of micro and macro-preparations of Anatomy and Pathologic Anatomy Museums, a collection of micro-preparations of the Department of Histology and Embryology are used for student teaching purposes too.
57. Majority of clinical subjects take place in Hospital of Lithuanian University of Health Sciences, which has 34 different Clinical Departments (1900 hospital beds): conservative medicine (Cardiology, Pulmonology, Gastroenterology, Nephrology, Endocrinology, Oncology, Haematology, Neurology, Dermatovenerology, Rheumatology, Rehabilitation), surgery (Surgery, Neurosurgery, Orthopaedics And Traumatology, Plastic And Reconstructive Surgery, Cardio And Thoracic Surgery, Vascular Surgery, Urology, Maxillofacial Surgery, Ophthalmology, Ear, Nose And Throat, Anaesthesiology), maternal and child medicine (Paediatrics, Neonatology, Obstetrics And Gynaecology, Paediatric Surgery), Pathology, Radiology, Laboratory Medicine. Emergency care is provided 24 hours per day in Emergency Department, there are 8 units of Intensive care in the Hospital. Studies are performed also in the branches of University Hospital – Romainiu Tuberculosis Hospital, Oncology Hospital, and in the Family Medicine Clinic, where primary health services are provided. Outpatient department of University hospital has 15 units, serving around 1 m patients per year. The hospital is equipped with the modern medical technologies: CT, MRI, PET, US scanners, linear accelerators, and other modern diagnostic and therapeutic equipment. All tertiary medical services, including organ transplantation and other complex operations are provided in University hospital.
58. Small volume specialized clinical studies are conducted in Kaunas Clinical Hospital where also there are modern working conditions.
59. Clinical practice of the study programme of Medicine is carried out in 32 accredited non-university multi-profile (emergency care, internal, surgical, paediatric diseases, obstetrics-gynaecology) hospital bases in various national areas. Also, agreements are signed with foreign hospitals to carry out practice.
60. To meet the student's needs LUHS Library and Health Sciences Information Centre (Eivenių str.6) was built in 2007. The library is opened on weekdays from 7.30 a.m. to 10.30 p.m., and on weekend from 10.00 a.m. to 8.00 p.m. The library contains 400 workplaces, 70 computers for individual work, 3 group (problem-based) learning classrooms, 8 workplaces in Multimedia class, 12 places in computer training class, seminar and conference rooms. Wireless Internet, self-service copying and printing, free scanning is available at the library.
61. There is a sufficient number of teaching materials to ensure achievement of study objectives and outcomes (about 140000 publications (textbooks, teaching and methodical aids) in the open funds of

the library). There is a lot of teaching literature in foreign languages too. The library subscribes to Lithuanian and foreign medical journals. Book issuing and receiving system is fully computerized and automated. There is a virtual library too, which helps from distant places to be available all the information. In 2012, 22 medical information databases have been subscribed, covering about 107 thousand e-books and 23 thousand titled electronic journals, as well as clinical medicine, drug information databases (*Annual Reviews, BMJ Journals, BMJ Clinical Evidence, Cochrane Library, EBSCO Publishing, Emerald Management ejournals Collection, Cambridge Journals Online, Henry Stewart Talks, LWW/Ovid SP, MD Consult, Medline, Natural Medicines Comprehensive LTL, SAGE Publications Online, Sciencedirect, Science Online, SpringerLink, Taylor & Francis, Up to date, Wiley Online Library, Wiley InterScience, and other*). RefWorks information management program is subscribed for academic community. The resources of the university library are constantly renewed according to the needs of teachers and students. The academic community is periodically informed about the newly received publications and about the renewal of databases: the messages are sent to the Departments, the information can be found at the library website, the exhibitions of books are organized and the lists of books with annotations are sent to the Departments. Every year LUHS Library and Information Centre spends 600 - 1000 thousand LTL for the books, periodicals and updating academic publications databases.

62. Students and academic staff are using 2200 University computers, software is modern and legal.
63. Students and academic staff are trained to use information databases, and training courses on database search engine are continually arranged.
64. The Units of the Faculty of Medicine constantly prepare and publish teaching books, necessary for learning of certain subjects. The need for various methodical publications is discussed at the Departments in the middle of the school year. At the beginning of each year the list of planned publications is handed in to the LUHS Committee of Publishing. The publications are discussed at the Board of the Faculty of Medicine and at the LUHS Publishing House.
65. Subject methodical materials have been placed on the University Intranet server since 2012.
66. Annually the need of equipment and tools is analysed emphasizing priority areas with the effort to enrich their material basis. Funding of Programme come from the state budget, income earned for services provided, and on-going project funds (Integrated National Programme of Medical Sciences, Programme for Renewal and Development of the Anatomy Institute Infrastructure, LUHS Project for Study Infrastructure and Basic Equipment Renewal). About 1 m LTL of the project funds have been spent annually for renovation of the prosectorium, the premises and study environment of the Institute of Anatomy. Modern classrooms have been arranged at the department of Histology and Embryology, equipped with modern microscopes and computerized teaching system. The microscopes are connected to the interactive blackboard. The Department of Languages and Education has been fully renovated.

Table 13 Funds (in thousands of LTL) for the programme of Medicine

	2008	2009	2010	2011	2012
Computer and office equipment	148,1	79,6	208,6	714,9	295,6
Furniture and other asset	268,3	323,3	63,3	49,8	201,1
Medical equipment	1556,3	453,1	1507,6	4007,5	2042,6
Small value asset	86,3	224,6	439,9	723,4	989,7
Reagents	342,2	211,6	618,4	948,5	863
Total	4409,2	3301,2	4847,8	8455,1	6404

Summary

67. The number of auditoria, laboratories and other facilities at LUHS is sufficient to ensure a successful teaching and learning process. LUHS library is fully supplied with books, methodical and scientific publications necessary for studies. Voluminous projects are carried out at LUHS, the funds of which are allocated for the improvement of the material basis of the medical programme. The weak point of the material basis is the lack of compact University campus. There are three teaching complexes in different places of the town.
68. The surroundings will be further improved – auditoria, teaching laboratories and classrooms will be renovated during 2011-2013 according to the project “The renovation of the infrastructure and basic facilities necessary for studies at the Lithuanian University of Health Sciences” and using its funds. The central University building and the Teaching laboratory building will be renovated; Centre of Medical Simulation will be opened.

STUDY PROCESS AND STUDENTS’ PERFORMANCE ASSESSMENT

69. The admission of Lithuanian students is carried out according to the general rules of admission to higher schools. The rules are confirmed by LAMA BPO (Lithuanian Higher Education Association of Joint Admission) and at the LUHS Senate. The citizens of Lithuania, who were educated abroad and citizens of foreign countries, are admitted according to the rules, established by the LUHS¹³. The number of students, who want to study at LUHS in the programme of medicine, is growing (table 14). The admission grades are also becoming higher (table 15). The total number of students admitted can be seen in Fig. 1.

Table 14 The choice of study programme according to the wishes of entrees

Year	1st choice		2nd choice		3rd choice		4th choice		5th choice		6th choice	
	Chose	Entered	Chose	Entered	Chose	Entered	Chose	Entered	Chose	Entered	Chose	Entered
2011	990	208	805	32	387	24	364	14	188	5	136	1
2012	1323	219	894	14	531	25	444	20	239	4	221	2
Total	2873	427	2190	46	1152	49	1054	34	534	9	451	3

Table 15 The highest and the lowest grades of the entrees to study programme Medicine

Year	Highest Competitive Score	Lowest Competitive Score
2010	23.40	16.48
2011	22.46	17.38
2012	23.70	18.51

70. The programme is divided into equal parts: 60 credits for one year. Mandatory contact work of the programme is 6400 hours (66.7%) and independent work - 3200 hours (33.3%).
71. When problem-based learning was introduced, presenting and learning of huge amount of facts was refused. The studies now are based on the logic thinking, understanding, practice and investigation. This tactics lessened the number of contact hours and increased time devoted to independent studies and research.
72. Studies are organized in accordance with Plan of Studies and Schedule. Students take courses in groups, following to the Study Schedule. Groups are formed and number of groups is established by Dean’s office, depending on planned number of students, National regulations, foreign language of entrees and level of its knowledge. Classes (lectures, practical work, laboratory work, seminars etc.) are evenly distributed over the semester. All the schedules allow lunch break. Student workload per week and per

¹³ <http://www.trc.lsmuni.lt>

semester is distributed rationally: no more than 6 hours per day and not more than 30 hours per week. Students have enough time for self-study tasks. A large number of classrooms in the Central Building, at the University Hospital and at the Teaching Laboratory building, which is nearby and sufficient number of lecture auditoria allows to make a rather compact timetable and often classroom work is finished by 3 p.m. In some Departments (e.g. The Institute of Anatomy, The Department of Histology and Embryology etc.), which also implement studies of other programmes, the amount of work done in the laboratories and auditoria is so huge, that students often stay in them for later hours. Students do a lot of independent work during classroom activities and after them, analysing the teaching material, solving diagnostic or problem tasks on their own or with the help of teachers. They work in the museums, computerized classrooms or at the bedside of the patients. Each Department has its own system of students' independent and self-studies and the students are introduced to it at the beginning of the course.

73. On the basis of the previous external evaluation of the Programme of Medicine and Lithuanian law, the mandatory research work has been included into the Programme since 2010. This is done according to the Regulations of Student's Final Research Work, approved by Board of the Faculty of Medicine on 16 December of 2009. The theoretical skills necessary for research work are acquired during the first year of studies in the course "The Basics of Statistics, Informatics and Organization of Research Work" and during the fourth year of studies in the course "Public Health Module, Part 1". The practical skills necessary for research work are acquired at the chosen LUHS Department under the guidance of scientific advisor. The process of research work:
- In the fourth year of studies the subject of research work is chosen and the collection of data begins;
 - In the fifth year the data are further collected and the standard report about the course of work is handed in for the dean;
 - In the sixth year the final report is prepared, revised and presented at the LUHS students' research conference. The novelty, reliability of the scientific data, the quality of the outcomes and the presentation is assessed by the special committee, affirmed by the Rector.
74. About 30% of students acquire additional skills of scientific work in research groups, which are headed by active teachers - researchers. Students present the outcomes of their scientific investigations at the meetings of research groups; make presentations at the seminars, while the best students present them at the joint research conferences of students and residents. Such conferences are held every year and the material of the conferences is published (table 16). Some active students together with teachers publish their articles in scientific journals.

Table 16 Scientific activity of students

Year	Activity	Number
2011/ 2012	SMD research groups	43
2012/ 2013	SMD research groups	47
2008	Presentations at the conference of young scientists and investigators	158 (in 13 workshops)
2010	Presentations at the conference of young scientists and investigators	235 (in 19 workshops)
2011	Presentations at the conference of young scientists and investigators	220 (in 21 workshops)
2011	Presentations in English at the International Conference on Health Sciences organised by SMD and LiMSA in Kaunas	98 (in 11 workshops)
2012	Presentations at the conference of young scientists and investigators	578 (in 26 workshops)

75. The assessment of the students' achievements is directly related with the study outcomes. The principles of assessment, the requirements for the assessment grade are regulated by the LUHS Study Regulations and presented in the descriptions of every subject. Some subjects and modules are assessed using cumulative grade system. A 10-point scale is used for the evaluation. The pass grade is five. There are different forms of assessment. Each department has created its own system. The students are informed about it at the beginning of studies. The final assessment is done in the form of

exam or project. Exams are usually taken in written form, sometimes in both forms: written and oral. During the examination students' practical skills are also checked. After each semester the assessment results are discussed at the Departments and at the meetings of Board of Faculty of Medicine and Rectorate.

76. In order to improve the evaluation system new regulations of evaluation of students' achievements were confirmed by the LUHS Senate decision on 14-12-2012 No 25-07. It will come into force in September of 2013¹⁴.
77. Recently some unpleasant facts of dishonest attempts to get a higher mark during examinations were noticed among students. They tried using cribs and telephones for that purpose. If students are caught in such an act they are excluded completely or dismissed from the programme for one year. In that case their studies can be renewed only in a year on the basis of the Rectorate decision.
78. Up to 14% of students admitted to a medical degree programme, discontinue their studies (Table 17). The most frequent reasons include the desire to change the university (for the convenience of residence), or the method of funding (re-entering to state-funded place). Due to the academic failure only few students are excluded (Table 18). The most frequently are excluded I - III year students. There are only single cases when a senior year student is excluded from the university.

Table 17 Students drop out

Year of entering	Admitted	Excluded
2008	320	45 (14%)
2009	321	29 (9%)
2010	321	27 (8.4%)
2011	311	26 (8.4%)
2012	327	9 (2.8%)

Table 18 Reasons of exclusion of students

Year	Course							
	I		II		III		IV	
	Under-achievement	The student's request	Under-achievement	The student's request	Under-achievement	The student's request	Under-achievement	The student's request
2012	-	9						
2011	1	10	-	15				
2010	2	14	1	8	-	2		
2009	2	9	1	6	1	8	1	1
2008	2	12	6	13	4	6	1	1

79. In pursuance of the study programme the students communicate closely with teachers in different fields and they are given information about the study peculiarities. The first-year students receive cognitive publication "For the Freshman." The first-year subject "Introduction to the study" provides great support for the novice. Study regulations, schedules and other information is in the University's website, comprehensive oral information is provided in the Dean's office of the Faculty of Medicine.
80. Academic support is provided for students in accordance with Regulations of LUHS Study¹⁵. Basic principles provides the students an introduction to the settlement procedures, evaluation criteria, deadlines, the right to a full explanation of the evaluation, the right to appeal, academic debt liquidation procedure, the possibility of a reasoned need to individual study schedule, the possibility to suspend and resume studies. The student's problems are discussed and solved at the Dean's Office,

¹⁴ http://ismuni.lt/media/dynamic/files/1583/studentu_pasiekimu_vertinimo_reglamentas.pdf

¹⁵ http://ismuni.lt/media/dynamic/files/286/ismu_studiju_reglamentas.pdf

usually – with participation of the representatives of Students’ Union. If it is necessary, the issues are discussed at meetings of the Rectorate.

81. Social support is provided to the students under various Lithuanian laws and LUHS documents. If it is necessary and meets appropriate criteria, the students are paid various scholarships, study cost reduction, reduced fees for the University dormitory are set and they are provided other support.
82. Students are regularly consulted about career opportunities. LUHS *Career Days* are held annually, during which students have the opportunity to meet with prospective employers. Information about possible career opportunities is placed in the University website and the Career Centre. Psychological support for students is provided by LUHS psychologist and associated volunteers. Students (Lithuanian citizens) have state health insurance and get free treatment. Other students should insure themselves. Catering is provided in key locations of University: the Central Building of the University, the library building and the University Hospital, Veterinary Academy campus. Self – government of student’s is allowed (the Students' Union) to serve the needs of students. The University has two sports complexes, students participate in the cultural life of the University.
83. The students who pose Learning Agreement signed by responsible person are allowed to have part of the studies in other universities. The University actively participates in the Erasmus programme, has signed an Erasmus Charter “ERASMUS University Charter”, and has partners in 26 countries (table 19 – 21).

Table 19 Outgoing students (Erasmus)

Academic year	Number of students	Country
2011/2012	22	Czech Republic, Spain, Italy, Portugal, France, Switzerland, Germany, Turkey
2010/2011	19	Czech Republic, Spain, Italy, Portugal, France, Turkey
2009/2010	27	Austria, Czech Republic, Spain, Italy, Poland, Portugal, France, Slovakia, Germany, Turkey
2008/2009	28	Austria, Czech Republic, Poland, Spain, Portugal, France, Slovakia, Sweden, Germany, Turkey
2007/2008	35	Austria, Belgium, Czech Republic, Spain, Italy, UK, Latvia, Poland, France, Finland, Sweden, Germany, Turkey

Table 20 Outgoing students’ mobility for clinical practice

Academic year	Number of students	Country
2011/2012	20	Germany, Italy, Belgium
2010/2011	16	Germany, Belgium, Italy
2009/2010	16	Germany, Italy, Belgium
2008/2009	19	Germany, Italy, Belgium

Table 21 Mobility of incoming students (Erasmus)

Academic year	Number of students	Country
2011/2012	24	Spain, Italy, Czech Republic, Latvia, Belgium, France, Poland, Bulgaria, Romania
2010/2011	25	Spain, Italy, Czech Republic, Latvia, Belgium, France, Poland, Turkey, Germany
2009/2010	25	Spain, Czech Republic, Italy, Turkey, Slovakia, Romania, France
2008/2009	22	Spain, Turkey, Czech Republic, Slovakia, Germany, Portugal, Romania
2007/2008	27	Spain, Turkey, Poland, Czech Republic, Austria, Romania

84. The students of the programme of Medicine are actively involved in clinical or research exchanges organized by Lithuanian Medical Students Association (LiMSA) too. Over the last five years 193 students of LUHS went to LiMSA summer exchange (50 students will leave in 2013), and 187 foreign students came to our University.

85. Virtually all the graduates continue their medical education in residency. All professionals who are completed a residency receive a job in various country's health care facilities, some of them leave to work abroad¹⁶. Only 4 physicians were registered at Lithuanian jobcentre on 01-Mar-2013.

Summary

86. The LUHS Programme of Integrated Studies Medicine has a long, historically established tradition as it has been taught since 1922. Structure of study programme is similar to many European medical study programmes, and last year, in collaboration with the University of Geneva, it was updated with the introduction of problem-based learning method. The popularity of the programme is very high and continues to rise; students are admitted with increasing competitive score. Abundance of foreign partners allows good conditions for the students' mobility that is provided in Bologna process. Students' academic and social support system is well-functioning. The graduates of the programme have an excellent opportunity to continue professional education and residency to pursue a professional career. Though number of willing to study in Lithuania and abroad is increasing, there is not possibility to matriculate more students. Unfortunately, it remains an incompletely solved academic integrity assurance, and it is planned to continue improvement of the assessment system, and improvement of research competence training.

PROGRAMME MANAGEMENT

87. The Programme of Integrated Studies Medicine is prepared in accordance with Description of General Requirements for the Awarding a Degree of the First Cycle and Integrated Study Programs¹⁷.
88. The Programme of Integrated Studies Medicine is administered in the levels of the University, of the Faculty of Medicine and of the Departments. Senate of LUHS approves the curriculum and its corrections, annual study plans, provides proposals to Rector concerning funding and reconstruction of University's structure. Dean of the Faculty of Medicine and Board of the Faculty of Medicine organize and supervise the process of studies of the programme, provide suggestions to Senate on the study implementation and quality improvement and so on. LUHS Study Centre works out study time tables and coordinates the occupation of the rooms. The Dean of the Faculty of Medicine runs the Theoretical and Clinical Departments and Institutes of the Faculty, whereas the Heads of these Units are responsible for working out study course units, for their proposal to the Board of the Faculty, and implementation. Within the Faculty, the Study Programme Creation and Development Committee and Study Programme Implementation and Evaluation Committee had been responsible for the implementation of a programme and for the constant supervision of its quality. Since 14-03-2013, after approval of University Senate, these functions are transferred to newly established Committee of the Study Programme¹⁸. Committee consists of the delegates of Faculty teachers, students and social partners.
89. Study programme is implemented by the University teachers and employees who are selected, employed and assessed in accordance with Lithuanian Law on Higher Education and Research, LUHS Statute and other legal acts; following European Commission recommendations on the European Charter of Researchers and Scientists Recruitment Code, and in accordance with the principles and values set out in LUHS Employee Acceptance and Evaluation^{19,20}. The responsibilities of the study programme implementers are defined in LUHS Study Regulation, Study Centre rules, and in job descriptions for Vice-Rector for Studies, the Head of the Study Centre, Dean of the Faculty, Head of a Department, and university teachers.
90. The policy of study programme quality assurance is based on the principles of cultural universality (all University community is involved in the process) and subsidiarity (the responsibility for the quality of

¹⁶ L. Starkienė "Planning Number of Physicians: from Research to Health Policy"
file:///Users/seima/Downloads/006_starkiene.pdf

¹⁷ Order of the Minister of Education and Science No V-501, 09 April 2010

¹⁸ http://ismuni.lt/media/dynamic/files/1506/12.12.14_d9.pdf

¹⁹ OL L 075/67, 2005

²⁰ Senate resolution No 19-09, 29-03-2012,

http://ismuni.lt/media/dynamic/files/281/studiju_kokybes_uztikrinimo_ismu_nuostatos.pdf

studies at the University is distributed among the members of its community). Attitudes for the assurance of study quality in University were approved by LUHS Senate on 20-01-2012, resolution No. 17-01, providing establishment and regulations for Committee of Studies Monitoring and Quality Assurance²¹. Previously the study quality assessment has been performed annually following resolution No. 20-2 of Rectorate of Kaunas University of Medicine, 23-06-2003. Assessing the organization of the study process on 31-12-2011, students made some critical comments on the intensity and efficiency of lectures and practical work classes, study literature. However, compared with the former assessment that took place during the previous years, positive changes were observed in these areas. Questionnaires registered a minimum number of complaints about the violation of pedagogical ethics²².

91. The dissemination of studies' quality improvement results is achieved by presenting them on the University website, during discussions at Departments and Faculty Board. Additional information is accessible for students through their representatives participating in the activity of University Committees and Boards. The information is also available to graduates and potential employers who take part in the work of University committees. Employers and stakeholders submit proposals which are always taken into consideration thereby promoting the mutual connection between the internal and external partners. The results of studies' quality assessment are presented in Rector's annual report too.

Summary

92. The management system of Medicine study program is clear and effective. University identifies processes and key structures and persons responsible for program implementation and management. The LUHS operates monitoring system of study quality, the work of Programme Committees has justified expectations improving the quality of the programme; questionnaires registered a minimum number of complaints about the violations of pedagogical ethics. It is believed that effective functioning of Study Programme Committee enables to foster collaboration of whole academic community, students and social partners in program management.

²¹ http://smuni.lt/media/dynamic/files/281/studiju_kokybes_uztikrinimo_lsmu_nuostatos.pdf

²² http://smuni.lt/media/dynamic/files/1038/straipsnis_apie_studiju_kokybe.pdf