



Lead with answers.

Our institution now has a trial of ClinicalKey.

Drive decision-making with a clinical search engine that gives you quick access to better evidence.

Fast

Thinks and works like a physician, recognizing concepts and offering shortcuts.

Complete

Draws relevant answers from a wide range of current, comprehensive content across 30+ medical specialties.

Convenient

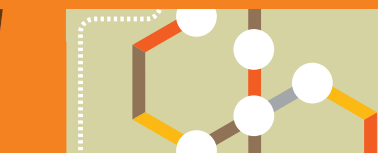
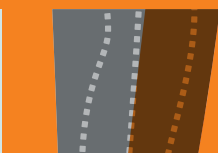
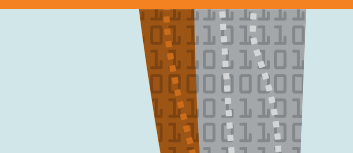
Accessible at the patient's bedside or on the go, making it easy to discover, share and apply content anywhere.

Trusted

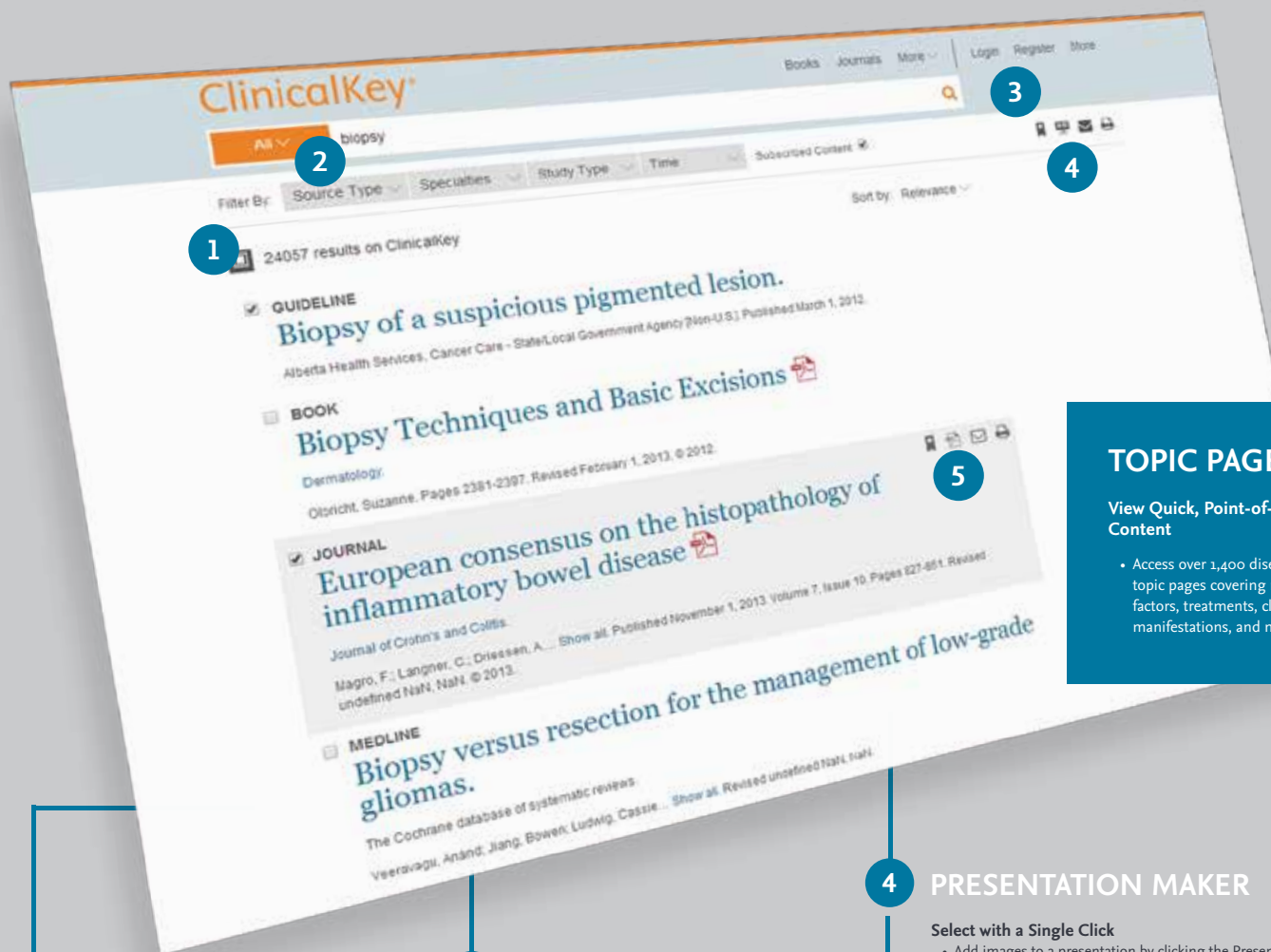
Content from Elsevier, the name healthcare professionals worldwide rely on.

Get started now at ClinicalKey.com!

For more information, please contact:



The ClinicalKey interface offers a faster, more convenient way to access answers.



1 SEARCH RESULTS AND FILTERS

Source Type

- Filter search results by a broad spectrum of content types, from journal articles, MEDLINE, books and images to clinical trials and Procedures Consult videos.

Specialties

- Sort by all major medical and surgical specialties.

Study Type

- Organize results by systematic reviews, meta analysis, randomized control trials and narrative reviews.

Time

- View results from the last 6 months, 12 months, 18 months, 2 years or 5 years. Results are automatically sorted by relevance.

2 SCOPED SEARCH

Access from Any Screen

- Use Scoped Search from anywhere in ClinicalKey, even inside book or journal content.

Restrict by Any Content Type

- Narrow search results by one of all content types available – not just books and journals.

Search within Content

- When already inside book or journal content, limit search results to that publication only or a particular portion of it.

3 PERSONAL ACCOUNT

Customize Your Access

- Create a personal account to gain CME credit and to access customizable features like the Presentation Maker and Saved Content.

4 PRESENTATION MAKER

Select with a Single Click

- Add images to a presentation by clicking the Presentation Maker icon – multiple images can be added at one time using the icon in the upper right of the screen.

Name and Manage

- Access the Presentations item in the User Menu to edit multiple presentations at once, using the Create, Change and Delete functions.

Export with Ease

- Use the Export button to convert your presentation to PowerPoint from either desktop or mobile.

5 SAVED CONTENT

Click and Save

- Hover over a search result and click the Save icon to add content to Saved Content – use the icon in the upper right of the screen to add multiple items.

Tag for Convenience

- Organize saved items by tagging them with one or more tags on the Saved Content page, allowing for access later.

TOPIC PAGES

View Quick, Point-of-Care Content

- Access over 1,400 disease topic pages covering risk factors, treatments, clinical manifestations, and more.